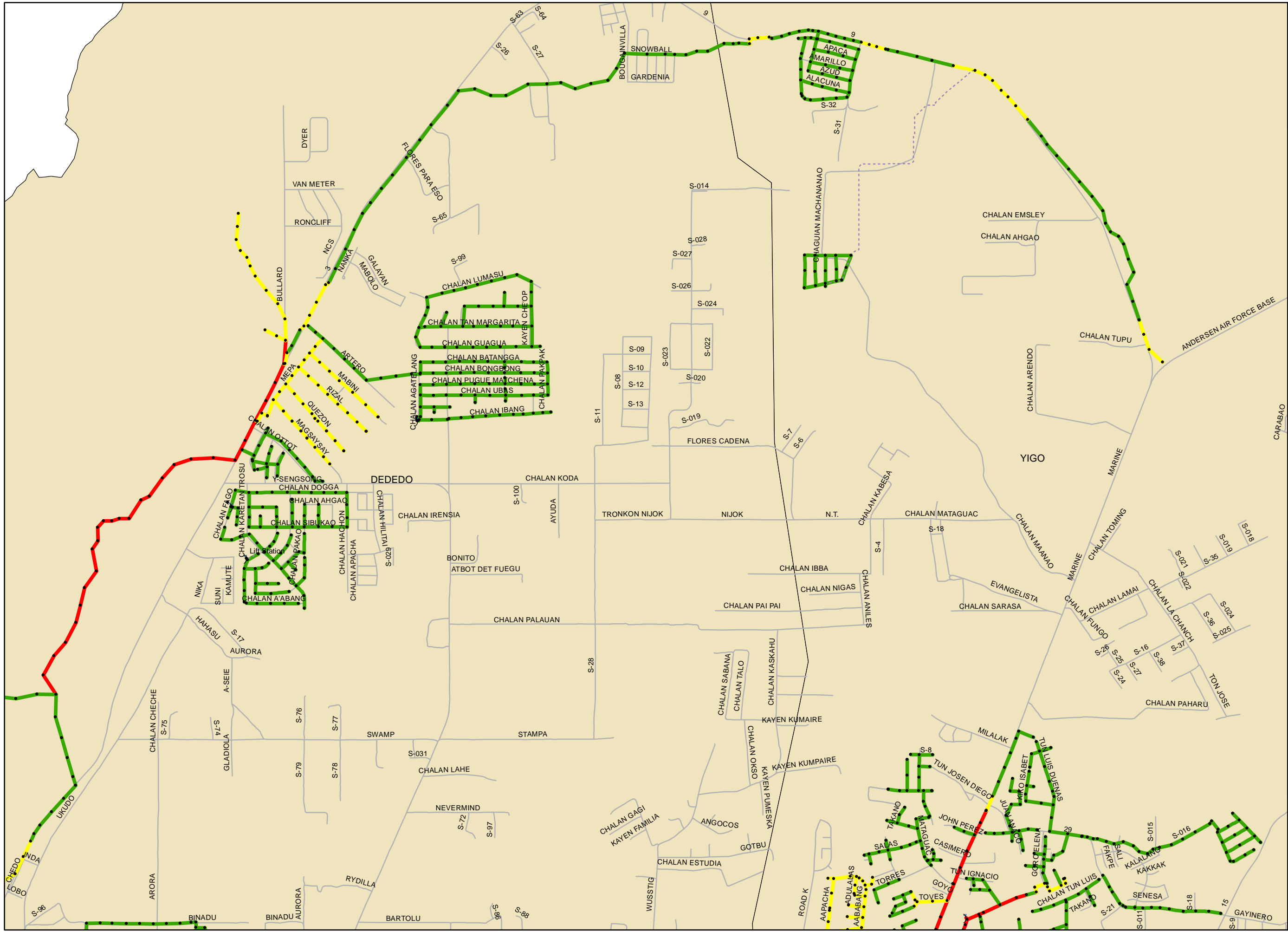


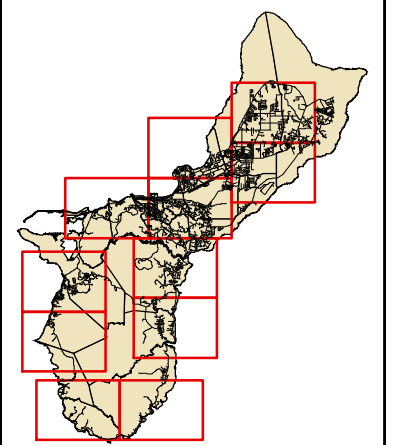
# GWA Collection System

Figure 4-5a  
Critical Sewer Rating



## Legend

- Treatment Plant &
- Pump Station }
- Discharge Point #
- Outfall ---
- Siphon - - -
- Force Main - - -
- Manhole •
- Critical Sewer Rating
  - <math>< 20</math> [Green Line]
  - <math>\ge 20</math> and <math>< 30</math> [Yellow Line]
  - <math>\ge 30</math> [Red Line]



0 1,000 2,000 Feet

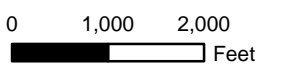
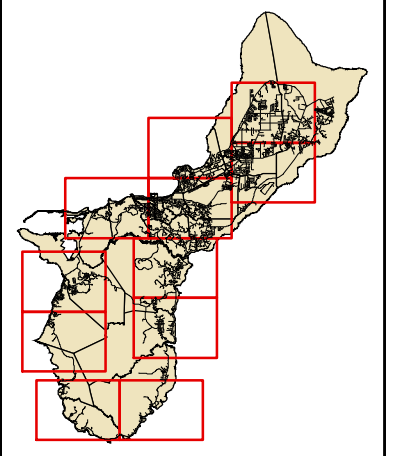
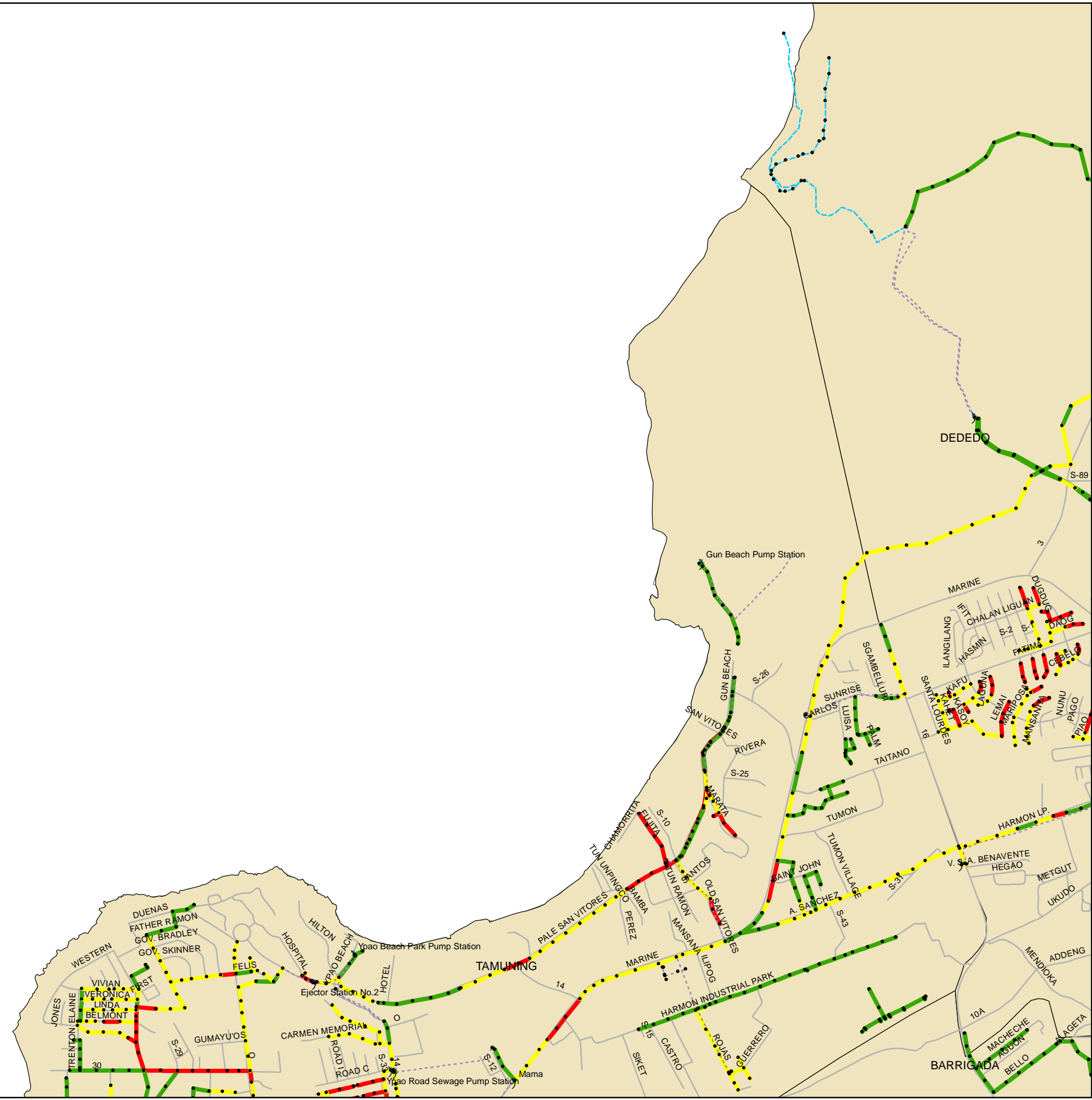


# GWA Collection System

Figure 4-5b  
Critical Sewer Rating

## Legend

- Treatment Plant &
- Pump Station )
- Discharge Point #
- Outfall ---
- Siphon - - -
- Force Main - - -
- Manhole •
- Critical Sewer Rating
  - < 20 —
  - ≥ 20 and < 30 —
  - ≥ 30 —



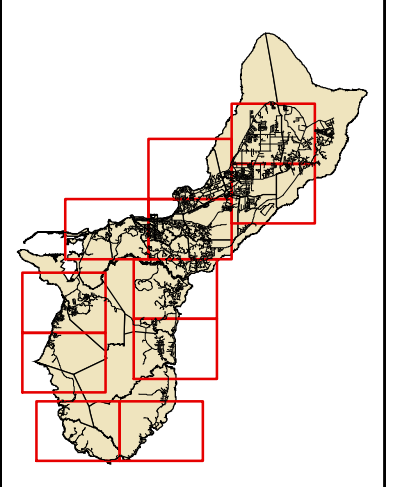
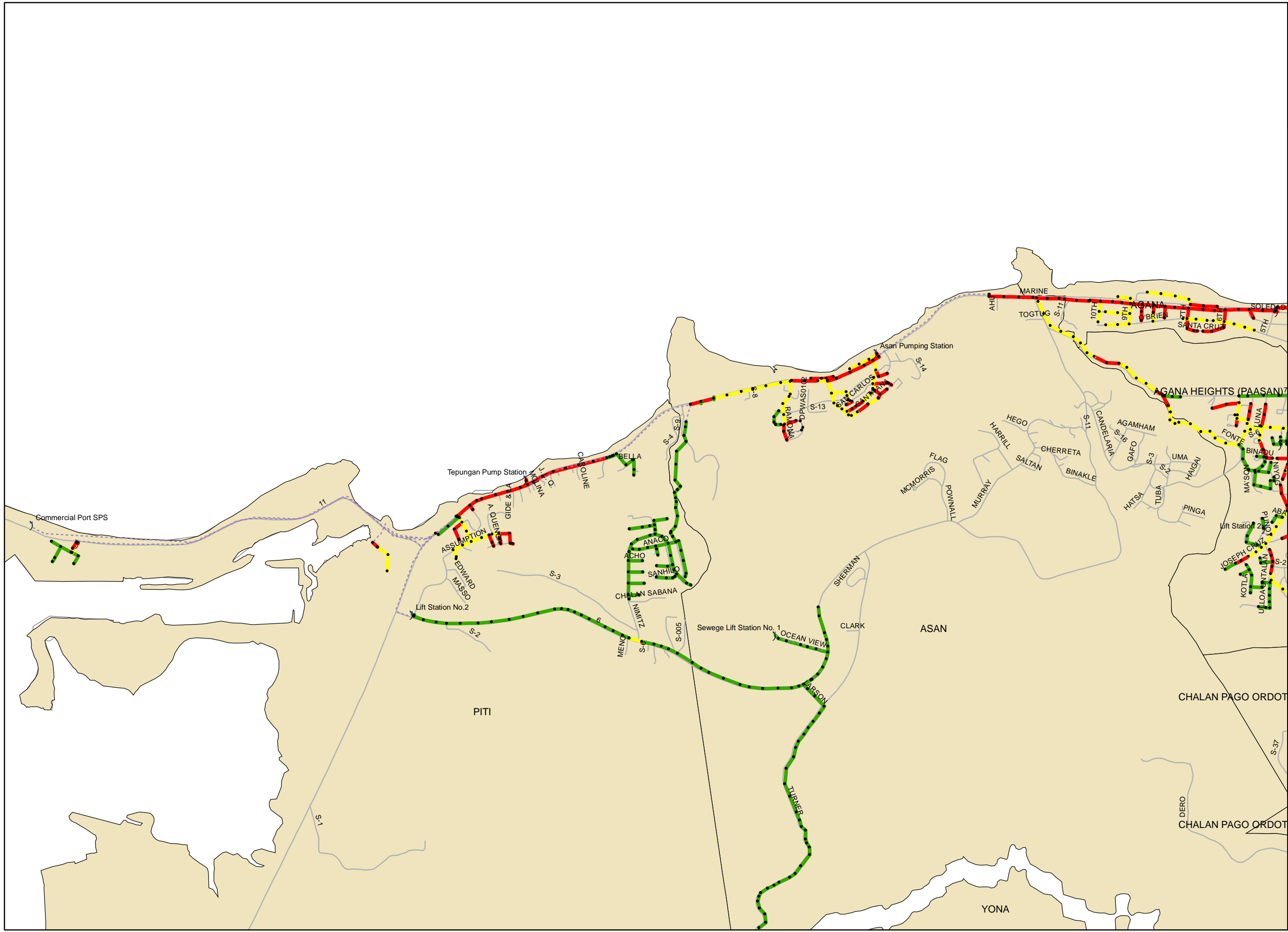


# GWA Collection System

Figure 4-5d  
Critical Sewer Rating

## Legend

- Treatment Plant &
- Pump Station }
- Discharge Point #
- Outfall ---
- Siphon - - -
- Force Main - - -
- Manhole •
- Critical Sewer Rating
  - < 20 —
  - ≥ 20 and < 30 —
  - ≥ 30 —



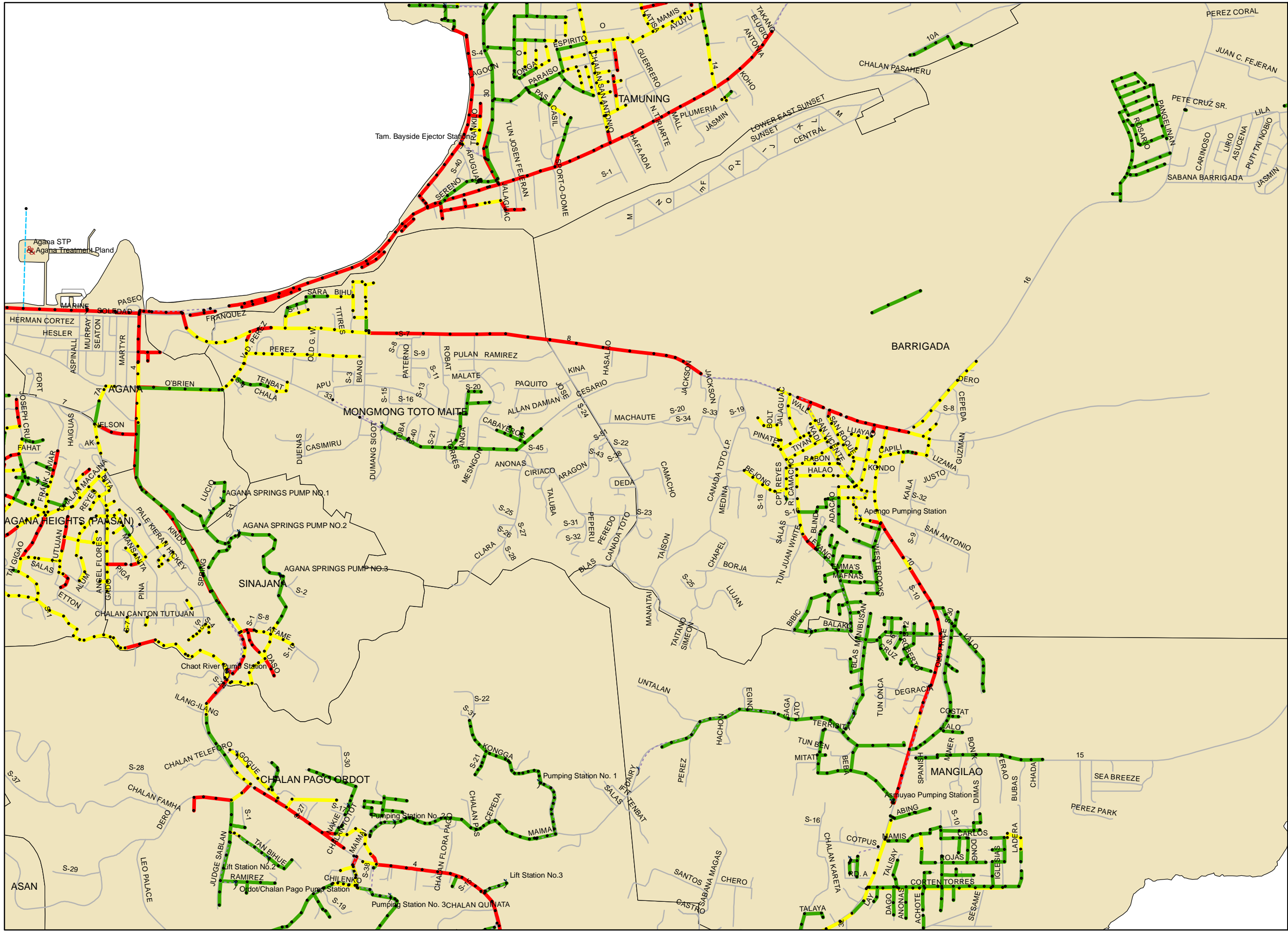
0 1,000 2,000 Feet





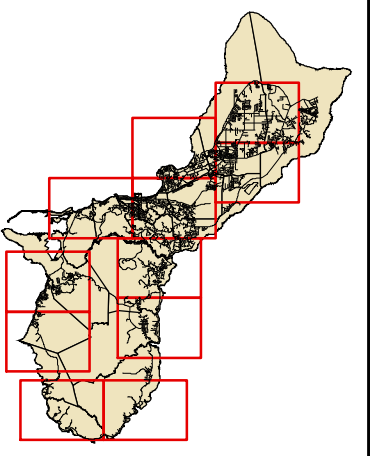
# GWA Collection System

Figure 4-5e  
Critical Sewer Rating



### Legend

- Treatment Plant &
- Pump Station }
- Discharge Point #
- Outfall - - - - -
- Siphon - - - - -
- Force Main - - - - -
- Manhole •
- Critical Sewer Rating
  - <math>< 20</math> [Green Line]
  - <math>\ge 20</math> and <math>< 30</math> [Yellow Line]
  - <math>\ge 30</math> [Red Line]



0 1,000 2,000 Feet

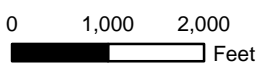
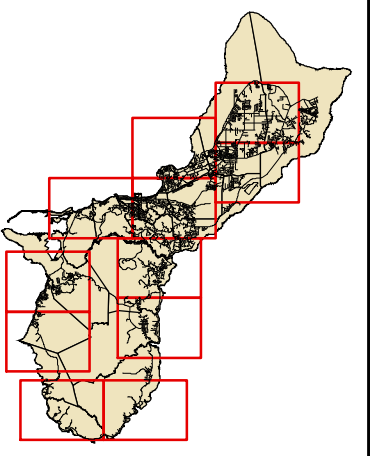
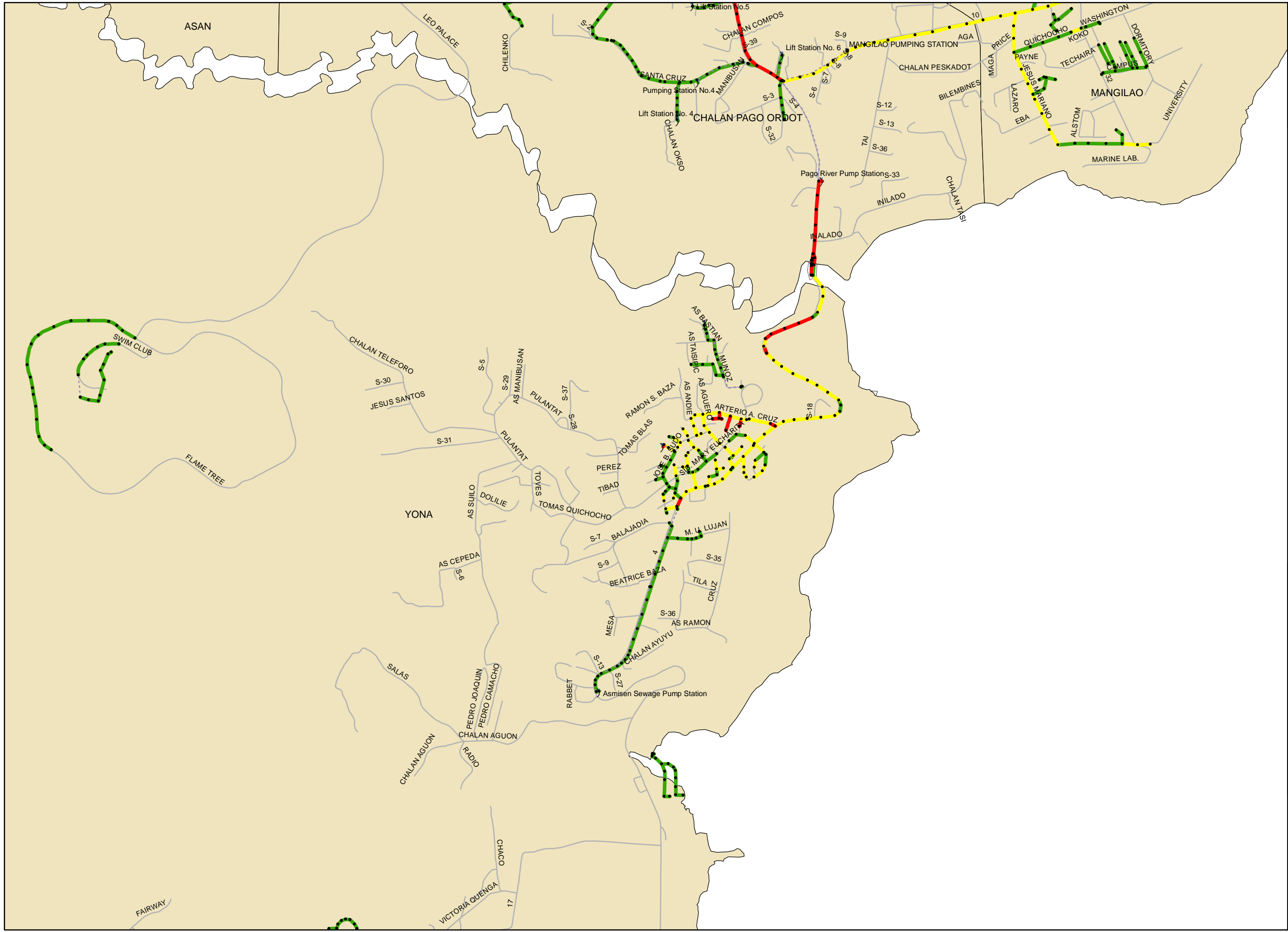


# GWA Collection System

Figure 4-5f  
Critical Sewer Rating

### Legend

- Treatment Plant &
- Pump Station )
- Discharge Point #
- Outfall ---
- Siphon - - -
- Force Main - - -
- Manhole •
- Critical Sewer Rating
  - < 20 —
  - ≥ 20 and < 30 —
  - ≥ 30 —

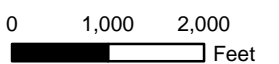
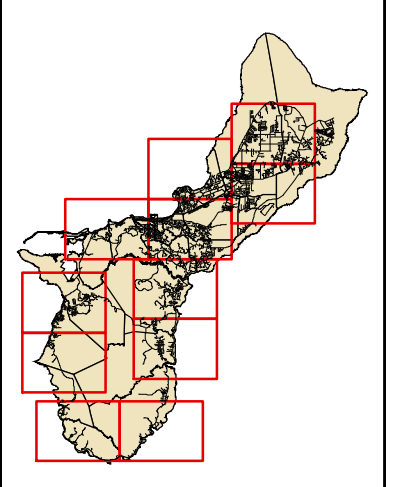
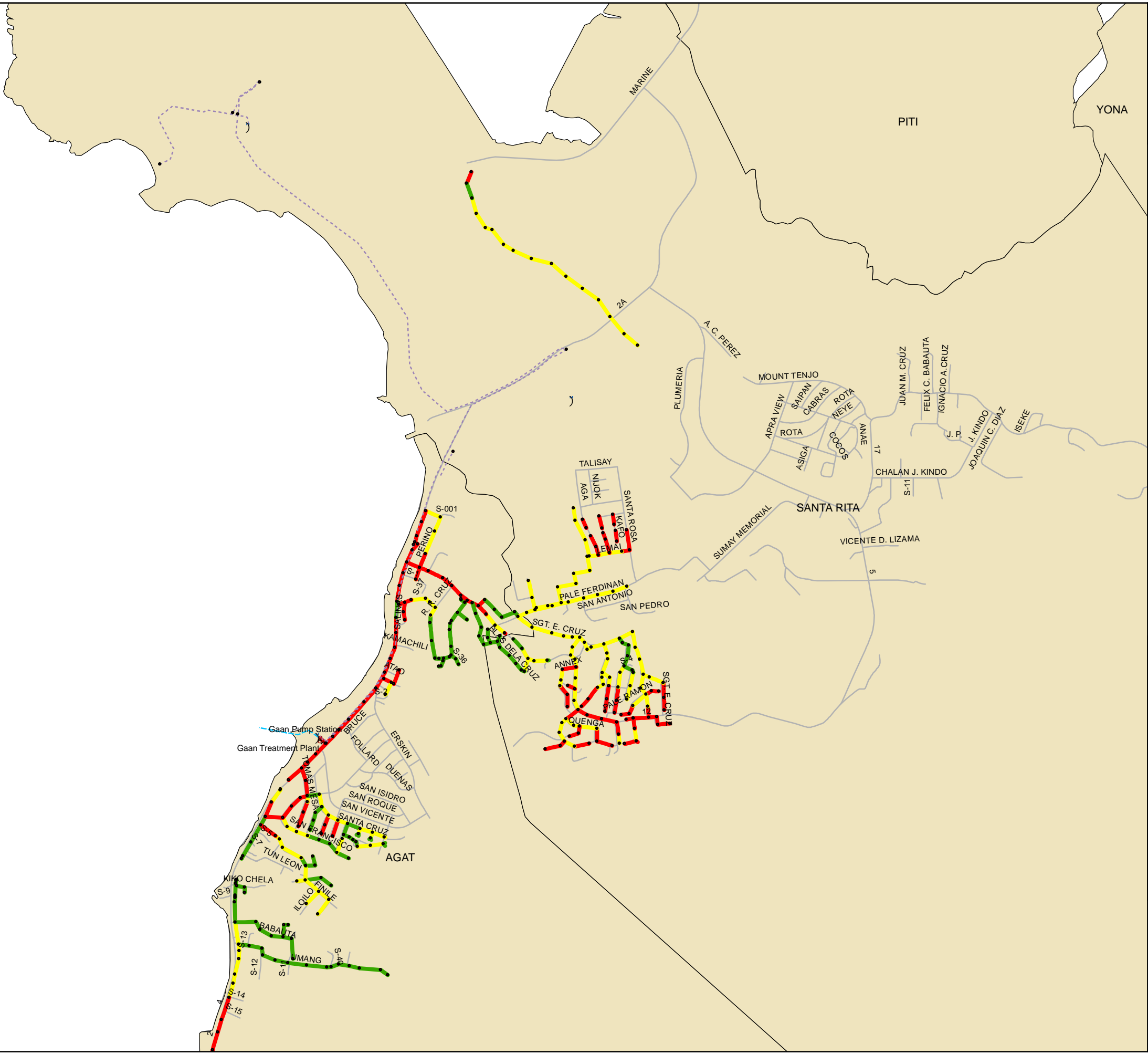


# GWA Collection System

Figure 4-5g  
Critical Sewer Rating

## Legend

- Treatment Plant &
- Pump Station )
- Discharge Point #
- Outfall ---
- Siphon - - -
- Force Main - - -
- Manhole •
- Critical Sewer Rating
  - < 20 —
  - ≥ 20 and < 30 —
  - ≥ 30 —

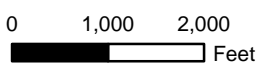
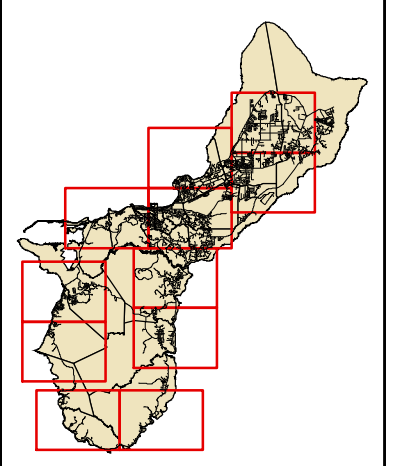
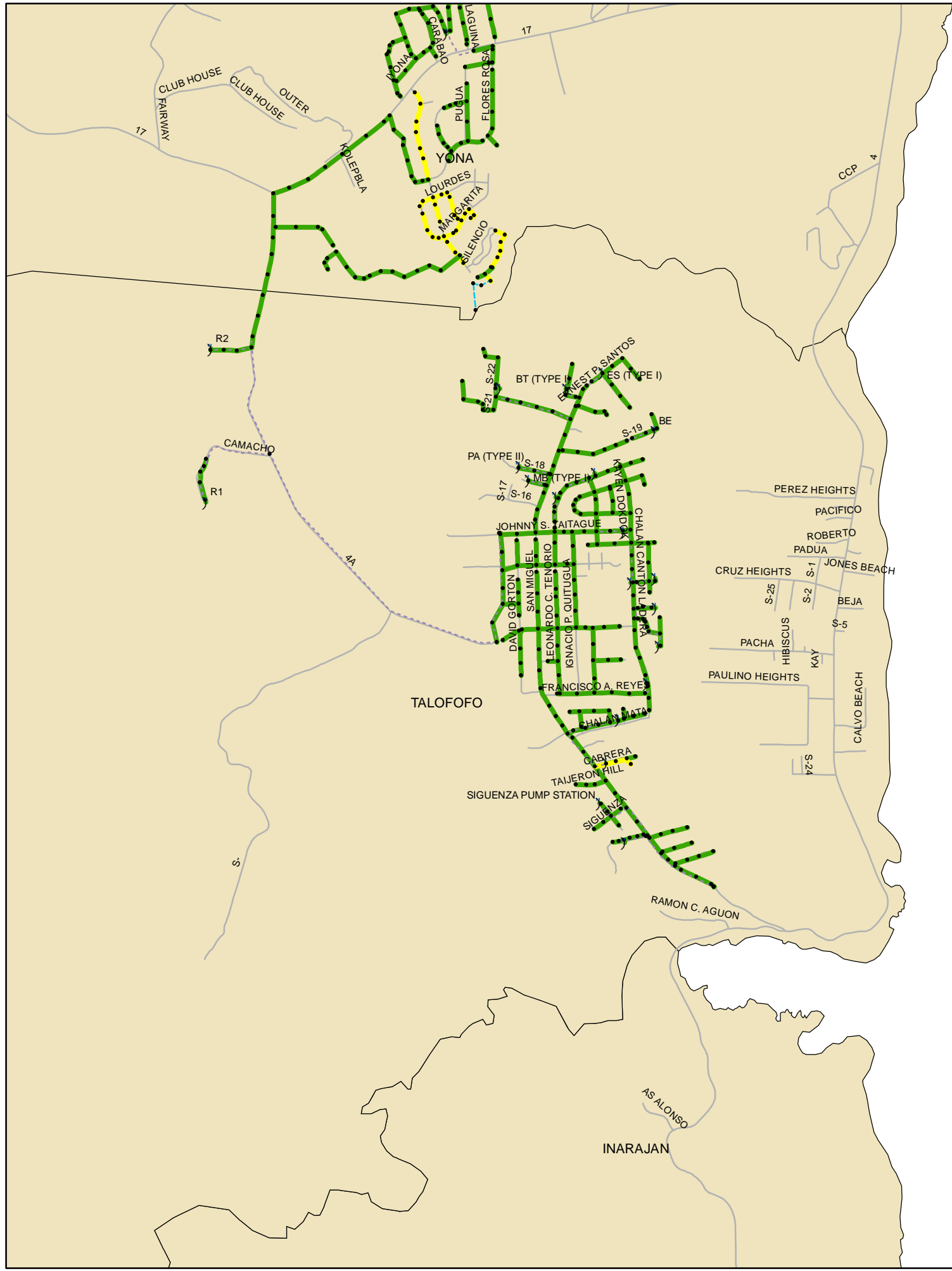


# GWA Collection System

Figure 4-5h  
Critical Sewer Rating

## Legend

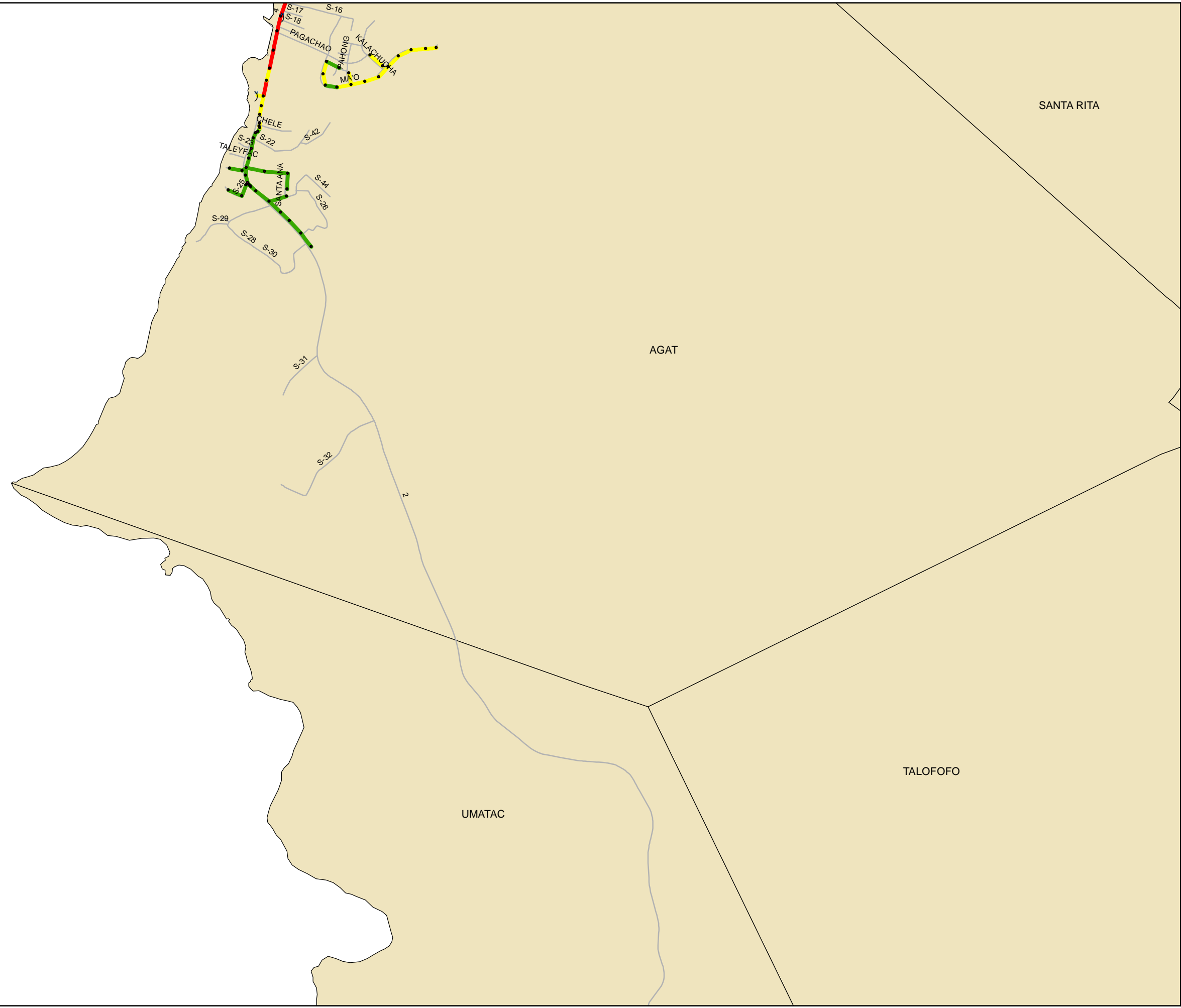
- Treatment Plant &
- Pump Station )
- Discharge Point #
- Outfall ---
- Siphon - - -
- Force Main - - -
- Manhole •
- Critical Sewer Rating
  - < 20 █
  - ≥ 20 and < 30 █
  - ≥ 30 █





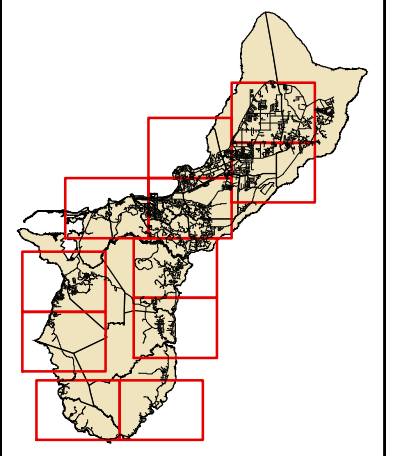
# GWA Collection System

## Figure 4-5i Critical Sewer Rating



### Legend

- Treatment Plant &
- Pump Station )
- Discharge Point #
- Outfall - - - -
- Siphon - - - -
- Force Main - - - -
- Manhole •
- Critical Sewer Rating
  - < 20 —
  - ≥ 20 and < 30 —
  - ≥ 30 —



0 1,000 2,000  
Feet

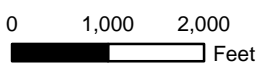
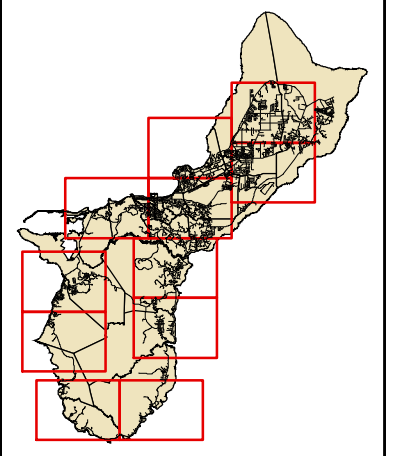


# GWA Collection System

Figure 4-5j  
Critical Sewer Rating

## Legend

- Treatment Plant &
- Pump Station )
- Discharge Point #
- Outfall ---
- Siphon - - -
- Force Main - - -
- Manhole •
- Critical Sewer Rating
  - < 20 —
  - ≥ 20 and < 30 —
  - ≥ 30 —



# GWA Collection System

Figure 4-5k  
Critical Sewer Rating

### Legend

- Treatment Plant &
- Pump Station )
- Discharge Point #
- Outfall ---
- Siphon - - -
- Force Main - - -
- Manhole •
- Critical Sewer Rating
  - < 20 —
  - ≥ 20 and < 30 —
  - ≥ 30 —

